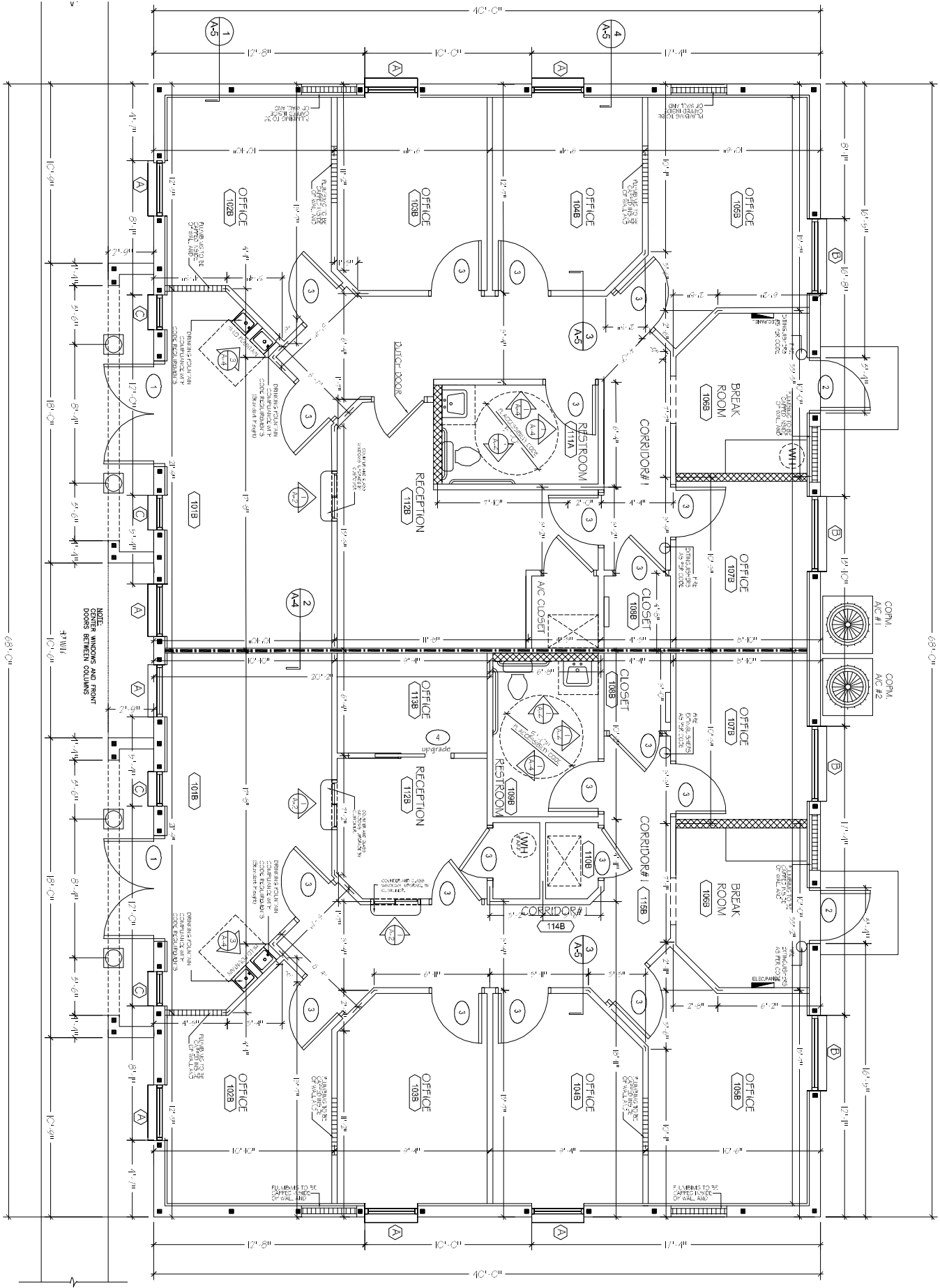


FLOOR PLAN
SCALE 1/4"=1'-0"



OFFICE BUILDING #5
AT MILL POND PROFESSIONAL CENTER
PASCO, FLORIDA

Kevin Howell Construction
BUILDING DESIGN SERVICES
18936 N. DALE MABRY Hwy. LUTZ, FL 33548
PHONE 813-9492400 FAX 813-9492219

REVISIONS	DATE	DESCRIPTION
1	1.08.13.08	
2	11.04.08	
3		
4		
5		